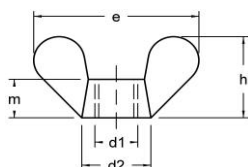


DIN 315 / DIN 315 A / DIN 316

DIN 315

~ HRN M.B1.680
~ UNI 5448

Krilna matica lijevana
Wing nuts, rounded wings
Flügelmuttern runde Flügelform

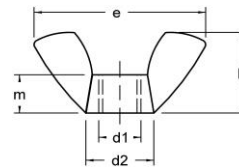


8Fe Zn

DIN 315 A

~ HRN M.B1.680
~ UNI 5448

Krilna matica kovana
Wing nuts, american type
Flügelmuttern, american forme



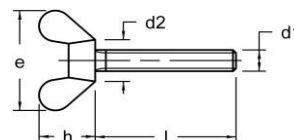
8Fe Zn

d1	d2	m	e	h	d1	d1	d2	m	e	h	d1	d2	m	e	h
M 4	8,0	4,6	20,0	10,5	M 4	o	o	M 3	8,0	3,5	17,6	8,6	o	o	o
M 5	11,0	6,5	26,0	13,0	M 5	o	o	M 4	8,0	3,5	17,6	8,6	o	o	o
M 6	13,0	8,0	33,0	17,0	M 6	o	o	M 5	10,3	4,5	22,5	11,0	o	o	o
M 8	16,0	10,0	39,0	20,0	M 8	o	o	M 6	12,7	6,0	27,8	13,6	o	o	o
M 10	20,0	12,0	51,0	25,0	M10	o	o	M 8	13,8	7,0	30,3	14,8	o	o	o
M 12	23,0	14,0	65,0	33,5	M12	o	o	M 10	16,5	8,0	36,2	17,7	o	o	o
								M 12	22,5	9,0	49,4	24,1	o	o	o

DIN 316

~ HRN M.B1.230
~ UNI 5449

Vijak s krilastom glavom
Wing screws
Flügelgeschrauben



5.8 Zn

d1	M 3	M 4	M 5	M 6	M 8	M 10	M 12
d2	6	8	11	13	16	20	23
e	16	20	26	33	39	51	65
h	8,6	10,5	13,0	17,0	20,0	25,0	33,5
l/d1	M 3	M 4	M 5	M 6	M 8	M 10	M 12
10	o	o	o	o	o		
12	o	o	o	o	o		
16	o	o	o	o	o	o	
20	o	o	o	o	o	o	o
25	o	o	o	o	o	o	o
30	o	o	o	o	o	o	o
35			o	o	o	o	o
40				o	o	o	o
45				o	o	o	o
50				o	o	o	o
55						o	o
60						o	o

