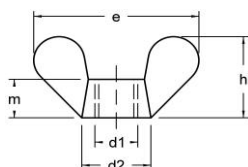


# DIN 315 / DIN 315 A / DIN 316

## DIN 315

~ HRN M.B1.680  
~ UNI 5448

Krilna matica lijevana  
Wing nuts, rounded wings  
Flügelmuttern runde Flügelform

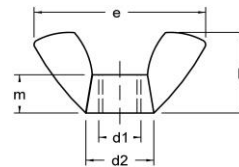


8Fe Zn

## DIN 315 A

~ HRN M.B1.680  
~ UNI 5448

Krilna matica kovana  
Wing nuts, american type  
Flügelmuttern, american forme



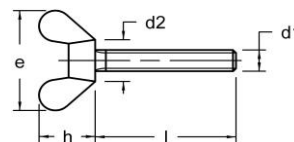
8Fe Zn

| d1   | d2   | m    | e    | h    | d1  | d1 | d2 | m    | e    | h   |      |      |   |   |
|------|------|------|------|------|-----|----|----|------|------|-----|------|------|---|---|
| M 4  | 8,0  | 4,6  | 20,0 | 10,5 | M 4 | o  | o  | M 3  | 8,0  | 3,5 | 17,6 | 8,6  | o | o |
| M 5  | 11,0 | 6,5  | 26,0 | 13,0 | M 5 | o  | o  | M 4  | 8,0  | 3,5 | 17,6 | 8,6  | o | o |
| M 6  | 13,0 | 8,0  | 33,0 | 17,0 | M 6 | o  | o  | M 5  | 10,3 | 4,5 | 22,5 | 11,0 | o | o |
| M 8  | 16,0 | 10,0 | 39,0 | 20,0 | M 8 | o  | o  | M 6  | 12,7 | 6,0 | 27,8 | 13,6 | o | o |
| M 10 | 20,0 | 12,0 | 51,0 | 25,0 | M10 | o  | o  | M 8  | 13,8 | 7,0 | 30,3 | 14,8 | o | o |
| M 12 | 23,0 | 14,0 | 65,0 | 33,5 | M12 | o  | o  | M 10 | 16,5 | 8,0 | 36,2 | 17,7 | o | o |
|      |      |      |      |      |     |    |    | M 12 | 22,5 | 9,0 | 49,4 | 24,1 | o | o |

## DIN 316

~ HRN M.B1.230  
~ UNI 5449

Vijak s krilastom glavom  
Wing screws  
Flügelgeschrauben



5.8 Zn

| d1   | M 3 | M 4  | M 5  | M 6  | M 8  | M 10 | M 12 |
|------|-----|------|------|------|------|------|------|
| d2   | 6   | 8    | 11   | 13   | 16   | 20   | 23   |
| e    | 16  | 20   | 26   | 33   | 39   | 51   | 65   |
| h    | 8,6 | 10,5 | 13,0 | 17,0 | 20,0 | 25,0 | 33,5 |
| l/d1 | M 3 | M 4  | M 5  | M 6  | M 8  | M 10 | M 12 |
| 10   | o   | o    | o    | o    | o    |      |      |
| 12   | o   | o    | o    | o    | o    |      |      |
| 16   | o   | o    | o    | o    | o    | o    |      |
| 20   | o   | o    | o    | o    | o    | o    | o    |
| 25   | o   | o    | o    | o    | o    | o    | o    |
| 30   | o   | o    | o    | o    | o    | o    | o    |
| 35   |     |      | o    | o    | o    | o    | o    |
| 40   |     |      |      | o    | o    | o    | o    |
| 45   |     |      |      | o    | o    | o    | o    |
| 50   |     |      |      | o    | o    | o    | o    |
| 55   |     |      |      |      |      | o    | o    |
| 60   |     |      |      |      |      | o    | o    |
|      |     |      |      |      |      |      |      |
|      |     |      |      |      |      |      |      |
|      |     |      |      |      |      |      |      |
|      |     |      |      |      |      |      |      |

