

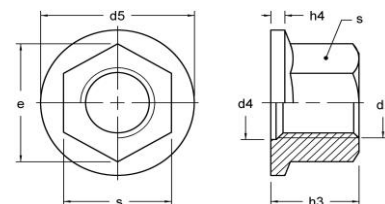
## DIN 74361 B

## DIN 74361 C

## DIN 74361 H

### DIN 74361 B

**Matica kotača**  
Flat collar-nuts/wheel nuts  
Flachbund-muttern



**10**   **Br**   **Zn**   **8**   **Br**   **Zn**

Korak	SW	d5	h3	h4	l/d			l/d		
1,5	19	27	15	3	14	o	o	14	o	o
1,5	24	29	18	4	18	o	o	18	o	o
1,5	27	34	20	5	20	o	o	20	o	o
1,5	30	36	22	6	22	o	o	22	o	o

### DIN 74361 C

**Podloška matice kotača**  
Limes-spring washers  
Kugelbund-Federringe

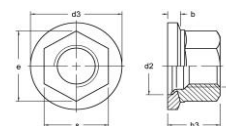


**Br**   **Zn**

d6	d8	d7	r1	h6	l/d		
12,5	14,5	23	12	5	12	o	o
14,5	17	26	14	6	14	o	o
18,5	20	29	16	7	18	o	o
20,5	24	34	18	8	20	o	o
22,5	24	34	18	8	22	o	o

### DIN 74361 H

**Matica kotača s podloškom**  
Flat collar-nuts/wheel nuts with washers  
Flachbund-muttern mit Scheiben



**10**   **Br**   **Zn**

Korak	SW	d2	d3	h	b	l/d		
1,5	27	25,5	40	25	4,5	18	o	o
1,5	30	28	45	27	4,5	20	o	o
1,5	32	30	46	27	4,5	22	o	o

