

QUALITY MANAGEMENT

We are certified for integrated management system acc. to ISO 9001:2015, ISO 14001:2015, ISO 50001:2011, ISO 45001:2018. Beside this certificates we possess technical certificates like EN 15085-2 Railway applications – Welding of railway vehicles and components, EN 15048 and EN 14399 for high strength structural bolting assemblies, PED 2014/68/EU, GOST R for fasteners. Our focus toward automotive industry is expected to result in implementation of IATF 16949 certificate.

Our commitment to environment is expressed through management and care of waste, implementation of nonhazardous technologies into process. Our laboratory for testing of mechanical properties of material and product is certified according to ISO EN 17025.

Contact us and we will provide you with the best solutions possible.

DIV GROUP Ltd.
BOBOVICA 10/A
HR-10430, SAMOBOR
CROATIA
railway@divgroup.eu

DIV CONCRETE SLEEPERS Ltd.
Member of DIV GROUP
DUŠANA TRIVUNCA 31
RS-18360, SVRLJIG
SERBIA
dcs@divgroup.eu

**ON THE
RIGHT TRACK**

RAILWAY PRODUCTS

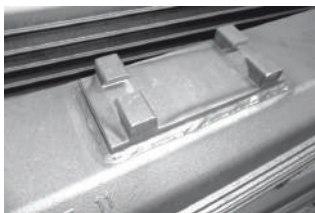
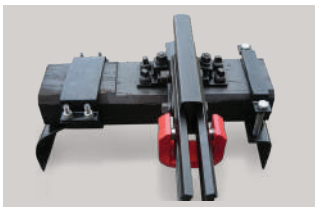
Within our Group, we have been developing production in the area of railway industry, and now, with the benefit of hindsight, we can say that we have become a leader in the production of railway accessories. We have two factories in our Group, one located in Knin (Croatia) and the other in Svrlijig (Serbia).

Most significant products:

- Sleeper screws (screw spikes e.g. Ss8, Ss25, Ss35...)
- "T bolts" (e.g. Hs32-55, Hs26/65...)
- Double elastic spring washers (e.g. Fe6)
- C clamps (e.g. Kpo6)
- Baseplates and fishplates (49E1, 60E1...)
- Standard and special bolts, nuts, washers (DIN 931, 933, 912, 934, 125, 127...)
- Concrete sleepers (B70 type 49E1 and 60E1 with W-14 fastening system)
- Steel sleepers



We can deliver complete fastening systems for concrete, steel and wooden sleepers for speed ratio up to 350 kilometers per hour.



PRE-STRESSED CONCRETE SLEEPERS PRODUCTION

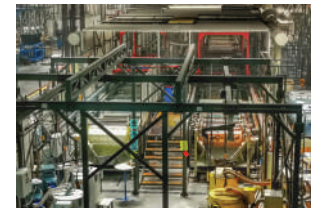
One of the most modern automated plants for concrete sleepers, located in Svrlijig (Serbia) is set to produce 500.000 pre-stressed concrete sleepers annually. Concrete sleepers with fastening system that has TSI certificate according to Directive 2008/57/EC.



First series of concrete-reinforced sleepers inspection has been carried out at Technical institute in Munich and the results were considerably above set criteria. Sleepers were tested for static and dynamic load as well as material fatigue. Testing was conducted according to European standards (EN 13230) and recommendations of the German railways.

DIV GROUP

The DIV Group specializes in shipbuilding, non-shipbuilding production of steel structures, processing, production of fittings and systems, production of railway infrastructure fasteners and other machine parts and metal products. Persistence on products of superior quality and competitive prices, products that meet the needs and desires of consumers, partnerships with smaller retailers, as well as retail chains and large groups, a developed distribution network and the knowledge and expertise of employees are key elements of the company's success.



OUR RAILWAY PROJECTS



Dugo Selo-Križevci is a strategic project of public importance and the biggest infrastructural railway project in Croatia financed

by European Union. The railway infrastructure project of high-efficiency double-track railroad works at the TEN-T trans-European corridor.